

Manual lens firmware update instruction

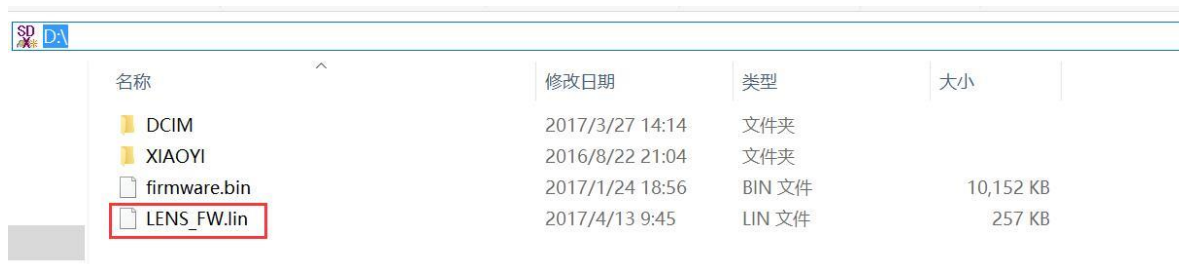
Note:

In order to update the firmware successfully, please keep the following precautions and inhibited points when it is in the update process.

a, Do not remove the battery; b, Do not take out the SD card; c, Do not remove/add power cords or any other cords; d, Do not uninstall the lens; e, Do not press any button; f, Do not cut off the power source.

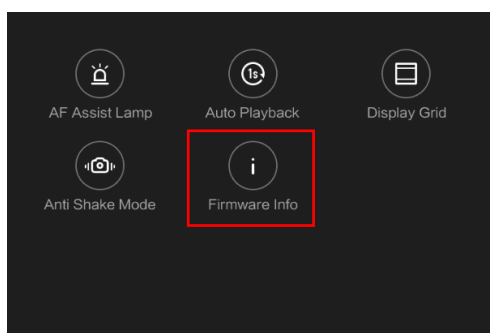
Otherwise, the camera/lens will be damaged, and can't get back to normal.

- 1, Ensure YI 12-40mm f/3.5-5.6 lens are installed correctly.
- 2, Ensure the battery capacity is more than 50%, copy the lens firmware file "LENS_FW.lin" downloaded to the SD card root directory, and insert the SD card into the slot.

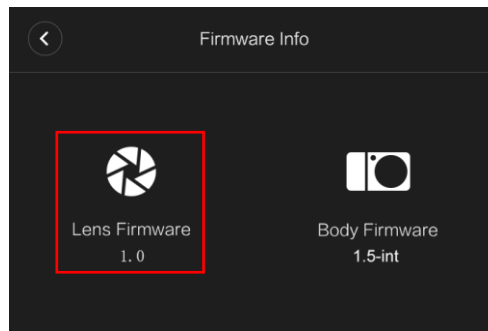


名称	修改日期	类型	大小
DCIM	2017/3/27 14:14	文件夹	
XIAOYI	2016/8/22 21:04	文件夹	
firmware.bin	2017/1/24 18:56	BIN 文件	10,152 KB
LENS_FW.lin	2017/4/13 9:45	LIN 文件	257 KB

- 3, Reboot the camera, slide right on the Live View screen and switch to the 'MENU SETTING' screen, then slide up twice and click the 'Firmware Info' icon, as shown below:



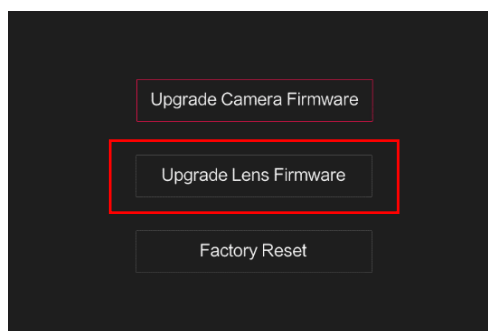
- 4, Click the 'Firmware Info' icon to check the current firmware version.



5, Press the 'Q' and 'PLAYBACK' buttons on the 'Firmware Info' screen at the same time, then switch to the Factory Settings screen.:



6, Select the 'Upgrade Lens Firmware' option, and a dialog will pop up. Select 'Yes', the update will be completed in 30 seconds and the camera will reboot automatically.



Check the Lens Firmware Info again after the rebooting.

