



YI-M1 视频功能使用说明

YI-M1 video function instructions

2017.10.27



如何进入视频Live View How to enter Video Live View



在P/A/S/M四个模式下，长按REC键2秒，可以进入视频Live View，进入后可以基于视频P/A/S/M曝光模式的AE控制，可以进行视频相关的MENU设置；

在自动/C/场景/全景 模式下，长按REC键2秒，可以进入视频Live View，进入后可以以全自动模式进行视频拍摄，但不能进入视频MENU设置，不支持AE和AF控制

In P / A / S / M modes, long press the REC button for 2 seconds, you will enter video Live View. After that, you can process AE control of the exposure mode in the four modes and change video settings.

In AUTO / C / scene / panorama mode, long press REC button for 2 seconds, you will enter Video Live View. After that, you can shoot a video in the auto mode. However, video settings can't be changed, and does not support AE and AF control either.

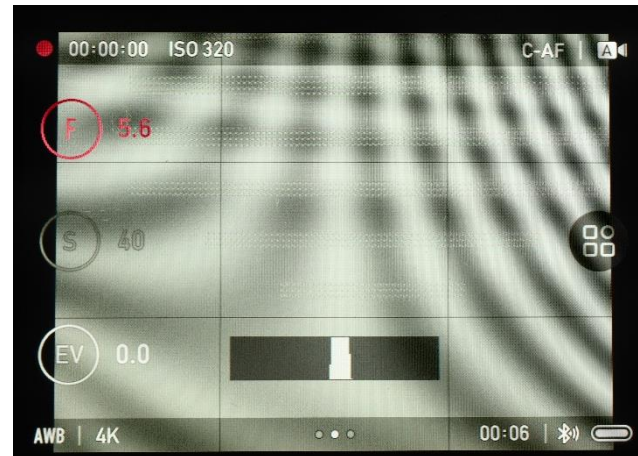


视频模式界面构成 Video mode interface

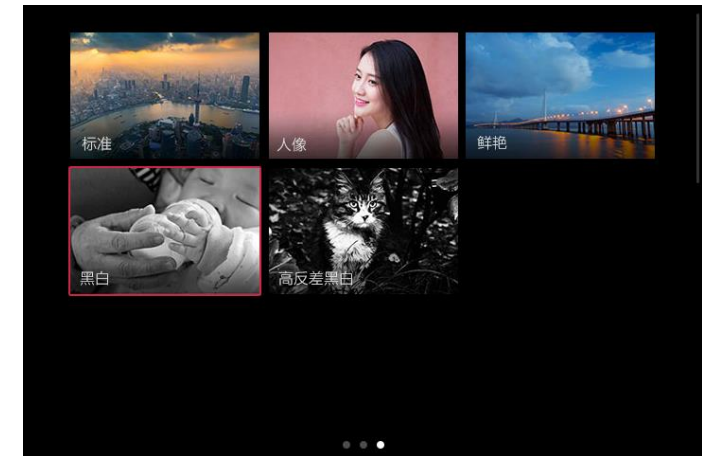


右滑屏进入视频MENU设置
页面

Slide right to enter the video
settings page



视频Live View界面
Live View interface



左滑屏进入色彩模式选择页
面

Slide left to enter the color
mode options page



如何开始/结束视频录制 How to start / end video recording



进入视频Live view后，短按REC键可以启动视频录制，再次短按可结束视频录制。若选择的是S-AF或C-AF，视频录制期间半按快门可执行AF，完全按下快门将停止视频录制并返回静态照片Live View；

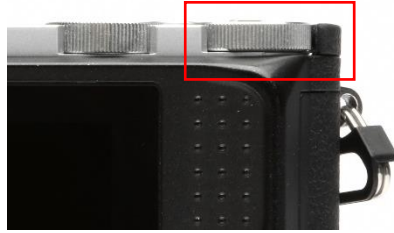
任何模式下，直接短按REC键，可以启动视频录制，但无法进入视频MENU（自动/C/场景/全景 模式），再次短按REC键可停止视频录制

After entering video Live view, short press the REC button to video recording, press it again to end it. In S-AF or C-AF mode, press the shutter button halfway during video recording to do AF, press the shutter button completely to stop the video recording and return to photo Live View; In all modes, short press the REC button to start the video recording, and press the REC button again to stop it. However, you can not enter video MENU page (Auto / C / scene / panorama mode).



视频曝光控制

Video exposure control

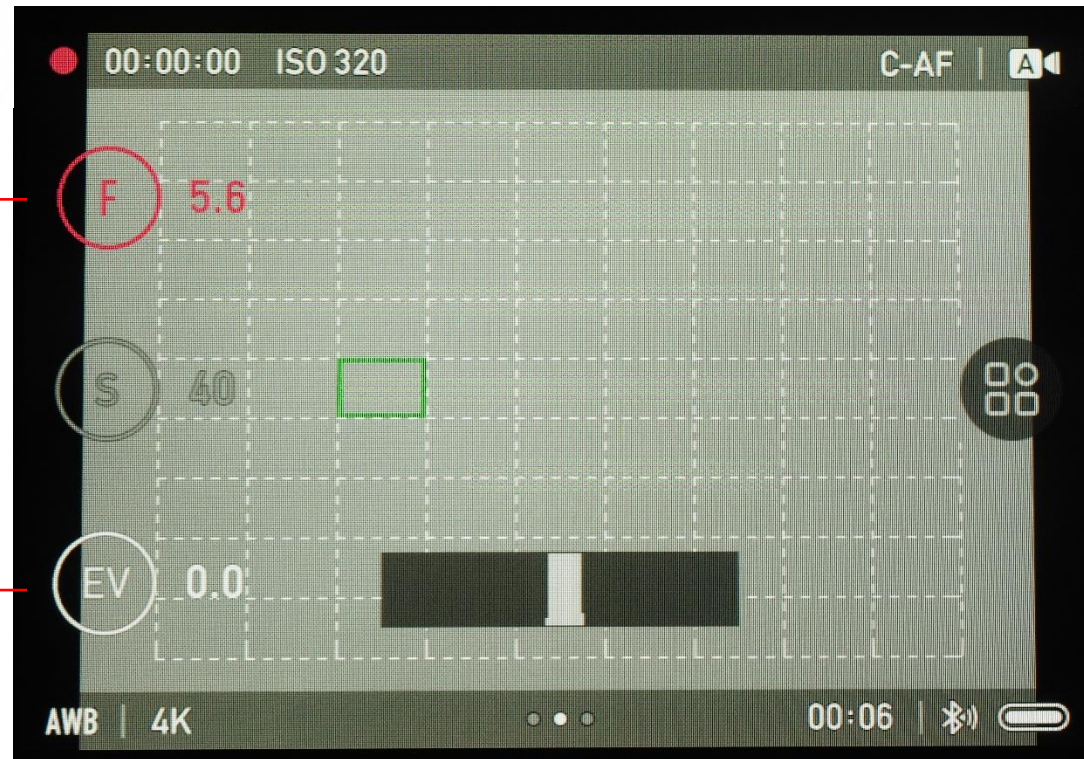


以A档为例，当icon为红色时，直接
拨动控制拨盘可以调整光圈

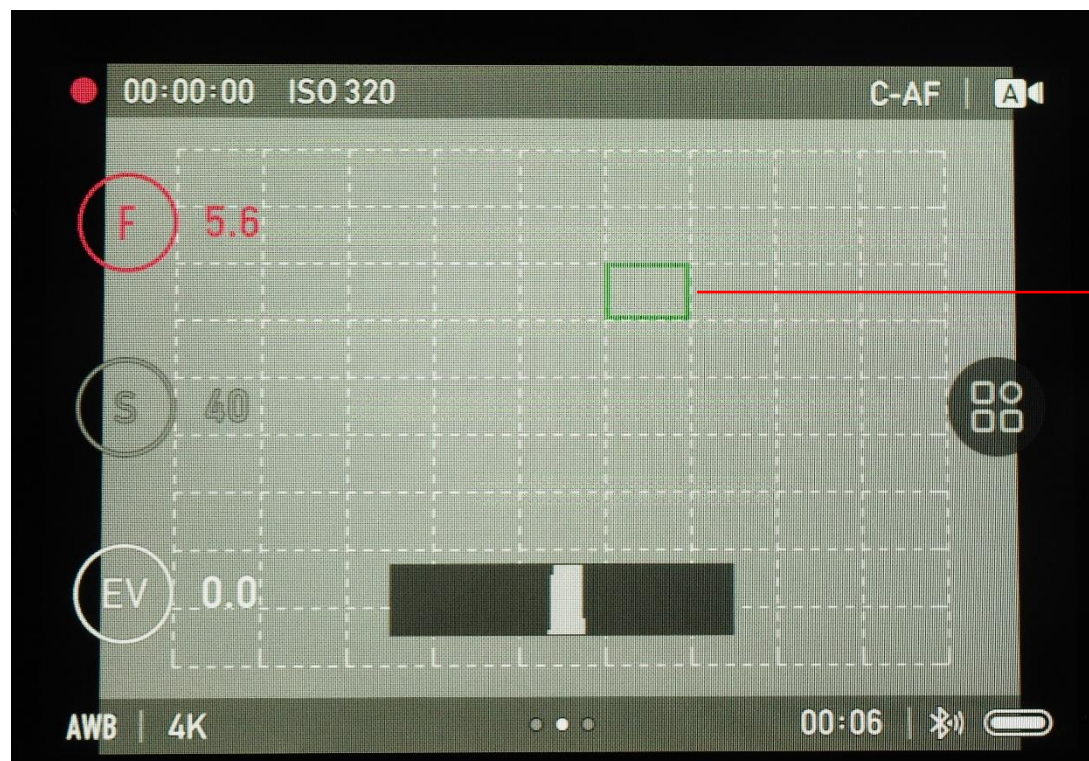
Take A mode as an example. When
the icon is red, please adjust aperture
by twirling the control wheel.

点击EV icon将变为红色，拨动控制
拨盘可以改变EV

Click EV icon, turn the control wheel
to change the EV.



视频AF控制 Video AF control



视频拍摄过程中，点击屏幕可以自由选择对焦点，相机将根据设置的对焦模式执行相应AF动作。按下Q键可切换为相机自动选择对焦点；

C-AF时，相机将对所选AF点执行连续对焦；

S-AF时，相机将对所选AF点执行单次对焦，合焦后停止AF动作

During video recording, tap the screen to choose the focus point freely, and the camera will perform the corresponding AF action according to the focus point you set. Press the Q button to switch to automatically selecting the focus point by camera;

In C-AF mode, the camera will perform continuous focus on the selected AF point;

In S-AF mode, the camera will perform a single focus on the selected AF point and stop the AF action after focusing.

视频手动对焦 Video manual focus



长按快速往前驱动对焦镜片，单击以最小步进驱动（only YI 42.5mm f/1.8）
Long press to drive the focus lens forward quickly, click to drive with minimal step

长按快速往后驱动对焦镜片，单击以最小步进驱动（only YI 42.5mm f/1.8）
Long press to drive the focus lens backward quickly and click for the minimum step drive

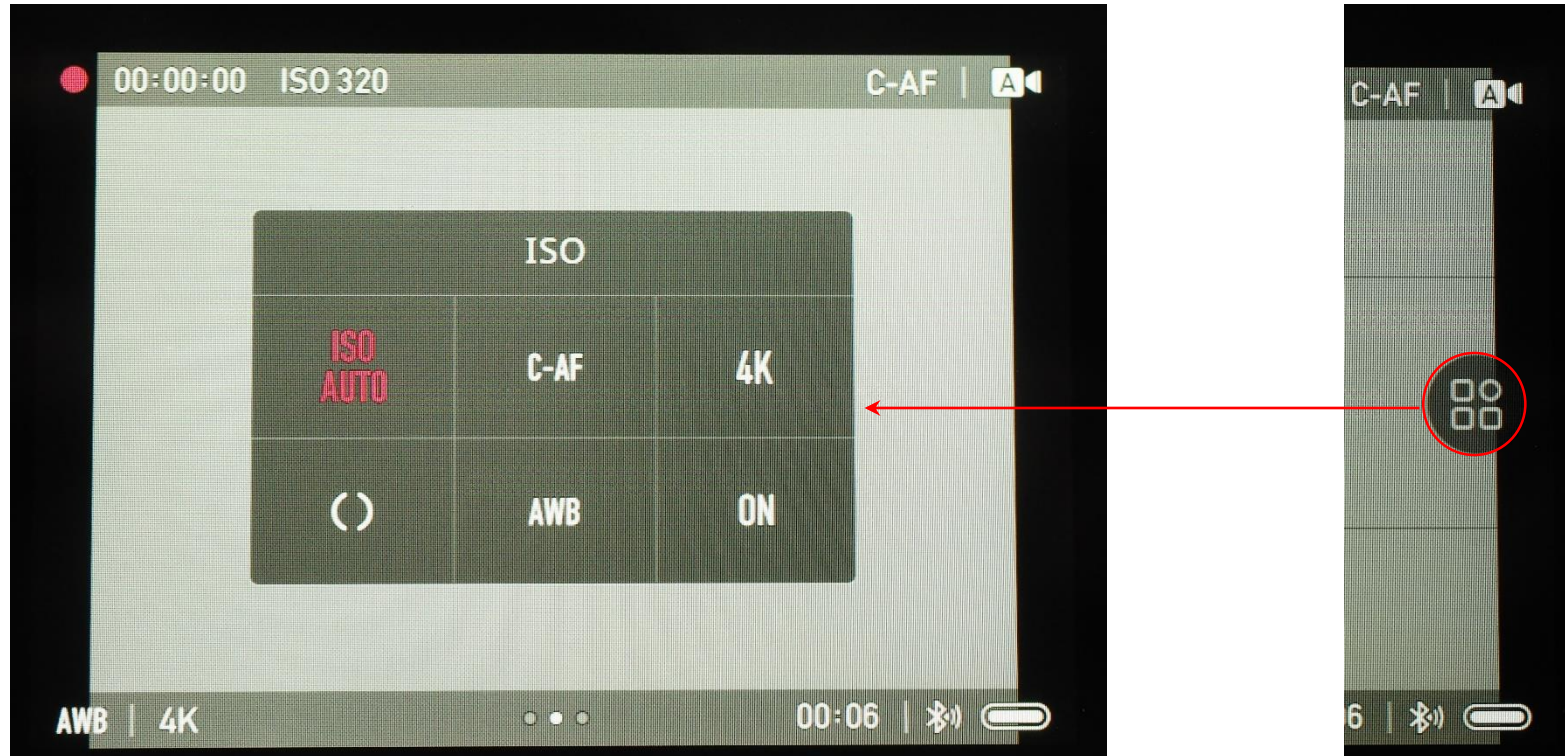


当选择MF或MF+PF对焦模式时，在开始录制前按下Q键可以放大取景画面，放大后的画面支持全向拖移查看，屏幕右上角会显示放大倍率，支持2X/4X/6X/8X/10X放大

When you select MF or MF + PF focus mode, Press the Q button before you start recording to zoom in on the framing screen. The enlarged picture supports omnidirectional view. The upper right corner of the screen will show magnification and it supports 2X / 4X / 6X / 8X / 10X zoom.



视频控制面板使用说明 Video control panel instructions



点击屏幕右侧的控制面板按钮可启用，若想改变某项参数，先点击使其变成红色，再通过控制拨盘调整参数。视频REC过程中支持参数调整

Click the control panel button on the right side of the screen to enable it. If you want to change a parameter, click to turn it red, and adjust the parameters through the control wheel. Video parameter setting is supported during video REC



The End